

MMD-UP_1HFP-T
FRESH AIR INTAKE



This indoor unit has been specifically designed to manage and treat fresh air before its distribution into the building.

CAPACITY



5 HP - 14 HP

AIR FLOW



Up to 1,080m³/h - 3,060m³/h

SOUND PRESSURE LEVEL



31 dB(A)

LOCAL CONTROLS



RBC-AXU31-E



RBC-ASCU11-E
RBC-AMT51-E
RBC-AMSU51-EN/ES

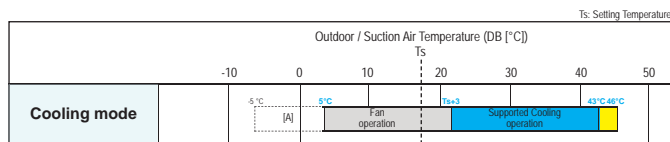
Features

Model name	MMD-	UP0481HFP-T	UP0721HFP-T	UP0961HFP-T	UP1121HFP-T	UP1281HFP-T	
Cooling capacity (*) (Note 1)	kW	14.0	22.4	28.0	33.5	40.0	
	BTU(*1.1)	47,800	76,400	95,500	114,300	136,400	
Electrical characteristics	Power supply	1-phase 50Hz 220-240V / 1-phase 60Hz 208-230V					
	Running current (50Hz/60Hz)	A	0.77/0.80	0.86/0.90	1.07/1.12	1.30/1.36	1.83/1.91
	Power consumption (50Hz/60Hz)	kW	0.108/0.108	0.153/0.153	0.198/0.198	0.240/0.240	0.330/0.330
	Starting current (50Hz/60Hz)	A	2.01/2.10	7.80/8.15	7.80/8.15	7.80/8.15	7.80/8.15
Dimensions (HxWxD)	mm	327x1430x750	477x1430x900				
Total weight	kg	44	99				
Soundproof / Heat-insulating material	Non-flammable insulation						
Fan unit	Fan	Centrifugal fan					
	Standard air flow (H/M/L)	m ³ /h	1080/930/760	1680/1440/1200	2100/1800/1470	2520/2130/1770	3060/2580/2130
	Motor output	W	350	1000			
	External static pressure (Factory setting)	Pa	100				
	External static pressure	Pa	50-75-100-125-150-175-200 (7 Steps)				
	Air flow limit	Lower limit	m ³ /h	600	960	1320	1500
Upper limit		m ³ /h	1320	2040	2520	3060	3600
Sound pressure level (H/M/L)	dB(A)	38/35/31	38/36/33	39/36/33	40/37/34	42/38/35	
Air filter	Option or field supply						
Connecting pipe	Gas / Liquid side	mm	15.9 / 9.5	22.2 / 12.7	28.6 / 12.7	28.6 / 12.7	
	Drain port (nominal dia)	mm	25 (Polyvinyl chloride tube)				

* The setting temperature is 13 - 25°C (standard IDU 18 - 30 °C).
 Note 1 : Rated conditions
 Cooling : Outdoor air temperature 33°C DB/28°C WB setting temperature 18°C
 Note 2 : When supply air temperature is "setting temperature + 3°C" or less, Fresh Air Intake unit operates as FAN mode
 Note 3 : When supply air temperature is "setting temperature -3°C" or over, Fresh Air Intake unit operates as FAN mode
 Note 4 : 46-52°C is also available but temporary operable

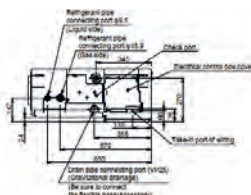
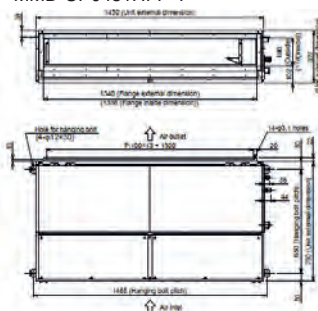
Use conditions

• In "COOL" or "FAN" mode, if temperature of the outdoor/suction air is under 5°C, the operation stops automatically in order to protect the equipment.

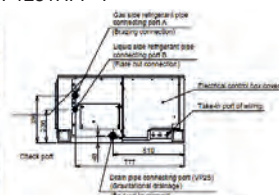
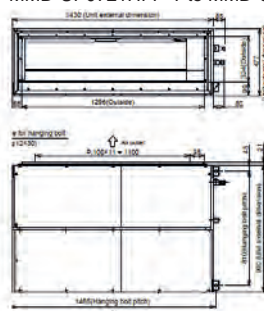


Drawings

MMD-UP0481HFP-T



MMD-UP0721HFP-T to MMD-UP1281HFP-T



Unit : mm

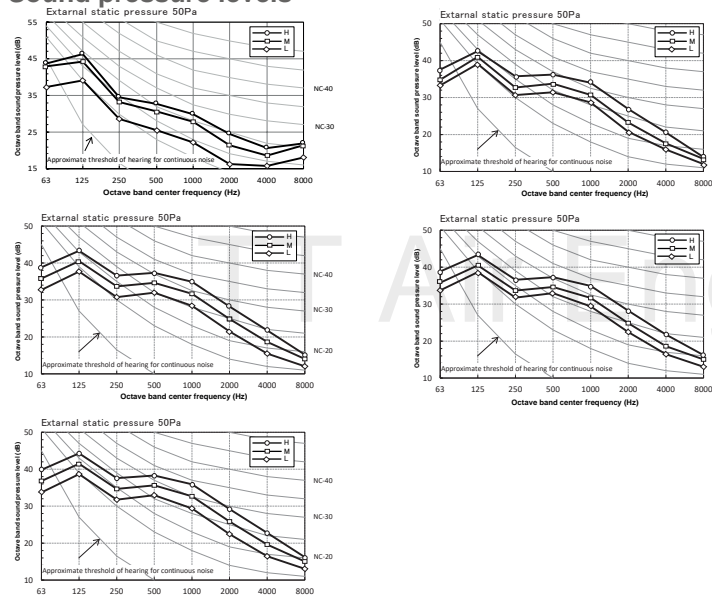
FRESH AIR INTAKE

Fresh air intake indoor unit type

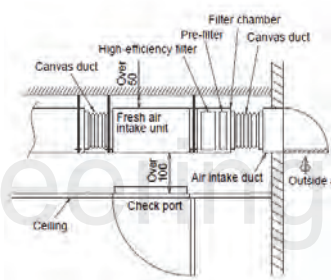
System restriction		SMMS-7 Multi IDU connection	SMMS-7 All fresh air intake connection	SMMS-∞ Multi IDU connection	SMMS-∞ All fresh air intake connection		
Max. no. of combined outdoor units		3	1	5	2		
Max. capacity of combined outdoor units		60HP	24HP	120HP	52HP		
Maximum number of connected indoor units		64	3	128	4		
Total capacity of combined Indoor+fresh air unit		80 to 110%	100%	80 to 110%			
Max. no. of combined Indoor units		3		4			
Allowable length and height difference of refrigerant piping			Allowable value (m)				
Pipe length	Total extension of pipe (Liquid pipe)	Actual length	m	300/1000	300	500/1200	300
	Farthest piping length	Equivalent / Actual length	m	235/190	150/130	250/210	230/210
	Main piping length	Equivalent / Actual length	m	120/100	120/100	120/100	120/100
	Farthest equivalent piping length from the first branching section	Equivalent length	m	90/65	30	90	90
	Maximum actual length of pipes connected to indoor units	Actual length	m	30	30	30	30
	Maximum equivalent length between branching sections	Equivalent length	m	50	50	50	50
Height difference	Height between outdoor and indoor units	Upper / Lower outdoor unit	m	70/40	40/3	70/40	70/40
	Height between indoor units /fresh air intake inits		m	0.5	0.5	40	5

Sound pressure levels

Unit : dB(A)



Other information



Accessories

No.	Part name	Model name	Applied model	Appearance	Notes
1	High-efficiency filter 65	TCB-UFM0481D-E	MMD-UP0481HFP-T		
2	High-efficiency filter 65	TCB-UFM1281D-E	MMD-UP0721 to 1281HFP-T		
3	High-efficiency filter 90	TCB-UFH0481D-E	MMD-UP0481HFP-T		
4	High-efficiency filter 90	TCB-UFH1281D-E	MMD-UP0721 to 1281HFP-T		
5	Stand alone long life prefilter	TCK-LK1401D-E	MMD-UP0481HFP-T		
6	Stand alone long life prefilter	TCK-LK2801DP-E	MMD-UP0721 to 1281HFP-T		
7	High efficiency long life prefilter	TCK-LK1401D-E (*2)	MMD-UP0481HFP-T		
8	High efficiency long life prefilter	TCK-PF1281DF-E	MMD-UP0721 to 1281HFP-T		
9	Filter chamber	TCB-FC0481DF-E	MMD-UP0481HFP-T		
10	Filter chamber	TCB-FC1281DF-E	MMD-UP0721 to 1281HFP-T		
11	Drain pump kit	TCB-DP40DFP-E	All models		
12	Wireless remote controller	RBC-AXU31-E	MMD-UP_1HFP-T		

Fresh air intake connectors

* : Available

	CN32	CN60	CN61	CN70	CN73	CN80
	Additional ventilation control from remote control	Operation status signal output (Cooling, fan, thermo-on)	External On/Off, operation output and alarm output	Warning symbol on remote control based on signal input.	Forced IDU thermo-off based on signal input	Forced IDU thermo-off and IDU lock based on signal input
5HP	•	•	•	•	•	•
8 & 14HP	•	TCB-PCUC2E PCB needed	•	TCB-PCUC2E PCB needed	TCB-PCUC2E PCB needed	TCB-PCUC2E PCB needed