

# Ceiling Suspended Type

## FXHQ-MA / B

FXHQ32 / 63 / 100MA

FXHQ125 / 140B

**NEW**

**STREAMER\*  
TECHNOLOGY**

Slim body with quiet and wide airflow



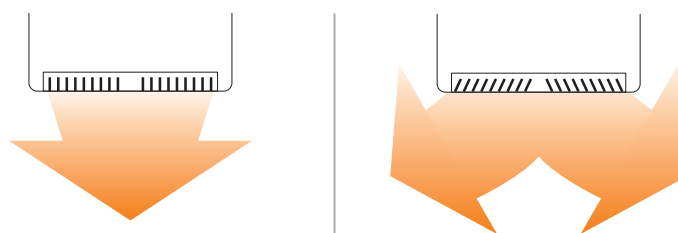
+



\*. Refer to option list page 108 - 109

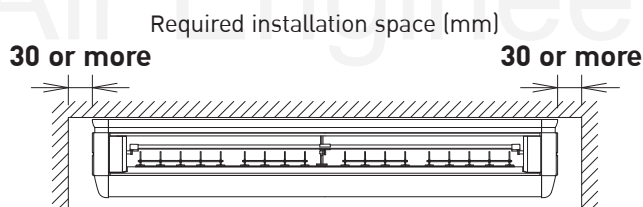
## Comfort

- Auto swing (up and down) and louvers (left and right by hand) bring comfort to the room.
- Louver manually adjusts for straight or wide angle airflow.



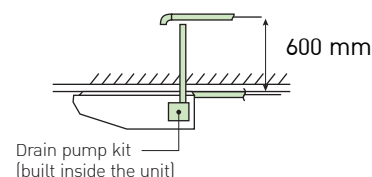
## Installation flexibility

- Flexible installation  
The unit fits more snugly into tight spaces.



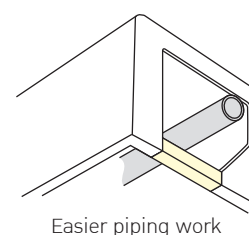
\* Water used in the test-run **can be drained** from the air discharge opening rather than from the side as was formerly the case.

- Drain pump kit (option) can be easily incorporated.  
Drain pipe connection can be done inside the unit.  
Refrigerant and drain pipe outlets are at the same opening.
- All wiring and internal servicing can be done from under the unit.



## New 125 / 140 models provide greater capacity for large spaces

- The technology of the DC fan motor, wide sirocco fan, and large heat exchanger combine for greater airflow and quiet operation.
- Sophisticated design: Flap neatly closes when not in use.
- Suitable for high ceilings: maximum 4.3 m
- Control of airflow rate has been improved from 2-step to 3-step.
- Drain pump kit (option) includes a silver ion antibacterial agent that assists in preventing the growth of slime, bacteria, and mould that cause smells and clogging.
- The rear side removable frame allows ease of access for piping work.



# VRV Indoor Units



- Wireless LCD remote controller

- A signal receiver must be added to the indoor unit



**BRC7M56**



Signal receiver unit (Install type)  
Wireless remote controller is supplied in a set with a signal receiver

## Specifications

MODEL		FXHQ32MAVS	FXHQ63MAVS	FXHQ100MAVS	FXHQ125BVMS	FXHQ140BVMS
Power supply		1-phase, 220-240 V/220 V, 50/60 Hz				
Cooling capacity	Btu/h	12,300	24,200	38,200	48,000	52,900
	Btu/h*	12,300	24,400	38,400	48,300	53,200
	kW	3.6 / 3.6*	7.1 / 7.2*	11.2 / 11.3*	14.1/14.2*	15.5 / 15.6*
Power consumption	kW	0.111	0.115	0.135	0.168	0.181
Casing		White (10Y9/0.5)			Sheet Metal / Light Ivory	
Airflow rate (H/M/L)	m <sup>3</sup> /min	12/ - /10	17.5/ - /14	25/ - /19.5	34/26/20	36/27/20
	cfm	424/ - /353	618/ - /494	883/ - /688	1,200/918/706	1,271/953/706
Sound level (H/M/L)	dB(A)	36/ - /31	39/ - /34	45/ - /37	46/41/37	48/42/37
Dimensions (HxWxD)	mm	195x960x680	195x1,160x680	195x1,400x680	235x1,590x690	
Machine weight	kg	24	28	33	38	
Piping connections	Liquid (Flare)	φ 6.4	φ 9.5			
	Gas (Flare)	φ 12.7	φ 15.9			
	Drain	VP20 (External Dia, 26/Internal Dia, 20)				

Note: Specifications are based on the following conditions:

- Cooling: Indoor temp.: 27°CDB, 19°CWB; \*27°CDB, 19.5°CWB, Outdoor temp.: 35°CDB, Equivalent piping length: 7.5 m, Level difference: 0 m.
- Capacity of indoor unit is only for reference. Actual capacity of indoor unit is based on the total capacity index. (See Engineering Data Book for details.)
- Sound level: Anechoic chamber conversion value, measured at a point 1 m in front of the unit and 1 m downward.  
During actual operation, these values are normally somewhat higher as a result of ambient conditions.