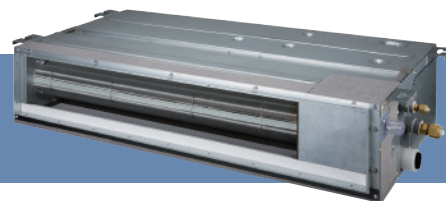


Slim Duct (Compact) Type

VRV Indoor Units

FXDQ-SP

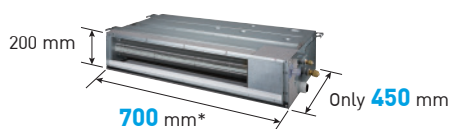
Slim and compact design for easy and flexible installation



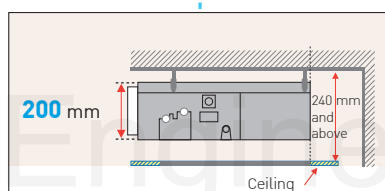
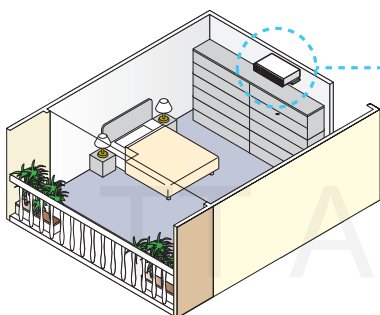
Installation flexibility

- Slim and compact design with a height of only 200 mm and the depth of only 450 mm which is suitable to install in limited spaces.

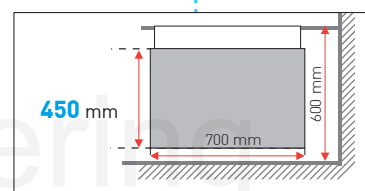
Great for residential use



*For FXDQ20-32SP models



Side view



Top view

- Drain pump is equipped as standard accessory with 750 mm lift.

Specifications

MODEL		FXDQ20SPV1	FXDQ25SPV1	FXDQ32SPV1	FXDQ40SPV1	FXDQ50SPV1	FXDQ63SPV1
Power supply		1-phase, 220-240 V, 50 Hz					
Cooling capacity	Btu/h	7,500	9,600	12,300	15,400	19,100	24,200
	Btu/h*	7,500	9,600	12,300	15,500	19,300	24,400
	kW	2.2 / 2.2*	2.8 / 2.8*	3.6 / 3.6*	4.5 / 4.6*	5.6 / 5.7*	7.1 / 7.2*
Power consumption *1	kW	0.072	0.075	0.078	0.180	0.180	0.196
Casing		Galvanised steel plate					
Airflow rate (HH/H/L)	m ³ /min	8.7/7.6/6.5	9.0/8.0/7.0	10.0/9.0/8.0	15.0/13.0/10.5		20.0/16.0/12.5
	cfm	307/268/229	318/282/247	353/318/282	530/459/371		706/565/441
External static pressure	Pa	30-10*2			50-20*2		40-20*2
Sound level (HH/H/L) *1*3	dB(A)	33/31/29		34/32/30	35/33/31		37/35/33
Dimensions (H×W×D)	mm	200×700×450			200×900×450		200×1,100×450
Machine weight	kg	17			20		23
Piping connections	Liquid (Flare)	φ6.4					φ9.5
	Gas (Flare)	φ12.7					φ15.9
	Drain	VP20 (External Dia, 26/Internal Dia, 20)					

Note: Specifications are based on the following conditions:

•Cooling: Indoor temp.: 27°CDB, 19°CWB.; *27°CDB, 19.5°CWB, Outdoor temp.: 35°CDB, Equivalent piping length: 5 m, Level difference: 0 m.

•Capacity of indoor unit is only for reference. Actual capacity of indoor unit is based on the total capacity index. (See Engineering Data Book for details.)

•Sound level: Anechoic chamber conversion value, measured at a point 1.5 m downward from the unit centre.

During actual operation, these values are normally somewhat higher as a result of ambient conditions.

* : Values are based on the following conditions: FXDQ20-32SP: external static pressure of 10 Pa; FXDQ40-63SP: external static pressure of 20 Pa.

*2 : External static pressure is changeable to set by the remote controller. This pressure means "High static pressure - Standard" . (Factory setting is 10 Pa for FXDQ20-32SP models and 20 Pa for FXDQ40-63SP models.)

*3 : The values of operation sound level represent those for rear-suction operation. Sound level values for bottom-suction operation can be obtained by adding 5 dB(A).