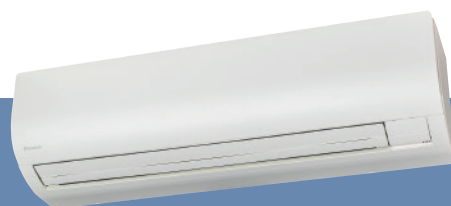


# Wall Mounted Type

## FXAQ-A

Stylish flat panel design harmonised with your interior décor



## Comfort

### Higher airflow



### Wireless LCD remote controller

A signal receiver must be added to the indoor unit.



### BRC7M676



- An invisible air intake at the top of the unit
- Vertical auto-swing enables efficient air and temperature distribution throughout the room.
- The louver closes automatically when the unit stops.
- Enhanced comfort is achieved.
- 5 step discharge angles can be set by remote controller.
- Discharge angle is automatically set at the same angle as previous operation when restart.

### Lower sound level

- Whisper quiet in operation, with sound levels as low as 28.5 dB(A)\*
- An ideal solution for a wide range of commercial spaces, including individual office spaces.

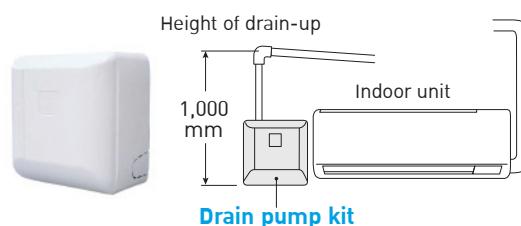
\*Sound level for FXAQ20-32A

## Stylish design and cleanliness

- Stylish flat panel design creates a graceful harmony that enhances any interior space.
- Flat panel can be cleaned with only the single pass of a cloth across their smooth surface. Flat panel can also be easily removed and washed for more thorough cleaning.
- Drain pan and air filter can be kept clean by mould-proof polystyrene.

## Flexible installation

- Drain pipe can be fitted to from either left or right sides.
- Drain pump kit is available as optional accessory, which lifts the drain 1,000 mm from the bottom of the unit.





## Specifications

MODEL		FXAQ20AVMS	FXAQ25AVMS	FXAQ32AVMS	FXAQ40AVMS	FXAQ50AVMS	FXAQ63AVMS
Power supply		1-phase, 220-240 V/220 V, 50/60 Hz					
Cooling capacity	Btu/h	7,500	9,600	12,300	15,400	19,100	24,200
	Btu/h*	7,500	9,600	12,300	15,500	19,300	24,400
	kW	2.2 / 2.2*	2.8 / 2.8*	3.6 / 3.6*	4.5 / 4.6*	5.6 / 5.7*	7.1 / 7.2*
Power consumption	kW	0.019	0.028	0.030	0.020	0.033	0.050
Casing		White (3.0Y8.5/0.5)					
Airflow rate (H/L)	m <sup>3</sup> /min	9.1/7.0	9.4/7.0	9.8/7.0	12.2/9.7	14.4/11.5	18.3/13.5
Sound level (H/L)	dB(A)	33.0/28.5	35.0/28.5	37.5/28.5	37.0/33.5	41.0/35.5	46.5/38.5
Dimensions (HxWxD)	mm	290x795x266			290x1,050x269		
Machine weight	kg	12.0			15.0		
Piping connections	Liquid (Flare)	ϕ 6.4					
	Gas (Flare)	ϕ 12.7					
	Drain	VP13 (External Dia, 18/Internal Dia, 13)					
		ϕ 9.5					
		ϕ 15.9					

Note: Specifications are based on the following conditions;

- Cooling: Indoor temp.: 27°CDB, 19°CWB.; \*27°CDB, 19.5°CWB, Outdoor temp.: 35°CDB, Equivalent piping length: 7.5 m, Level difference: 0 m.
- Capacity of indoor unit is only for reference. Actual capacity of indoor unit is based on the total capacity index. (See Engineering Data Book for details.)
- Sound level: Anechoic chamber conversion value, measured at a point 1 m in front of the unit and 1 m downward.  
During actual operation, these values are normally somewhat higher as a result of ambient conditions.