

DX COIL INTERFACE ADVANCE

40VAM--C8FATEE, 40VA-V8-ATEE



NEW

The DX Coil Interface Advance is built to enable seamless connectivity. With this, users can connect XCT8 and third-party air handling units by TA, DDC or TF control conditions.



LOCAL CONTROLS



40VCW56-8-JEE

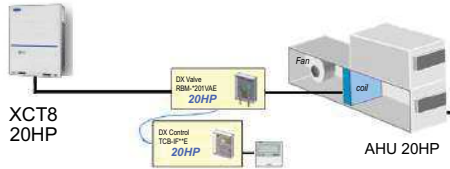
DX Coil Controller

Model name	40VAM--C8FATEE (Terminal block without relay)	40VAMR-C8FATEE (Terminal block with relay)
Power supply	1-phase 50Hz (220-240V)/1-phase 60Hz (208-230V)	
Appearance	Heat-insulating material attached: Zinc hot dipping steel plate	
Dimensions (HxWxD)	mm 420x330x122	
Total weight	kgs 4.0	4.1
Controllable operation type	TA, DDC, TF	
Operable ambient condition	° C/RH 5-52/10-80	

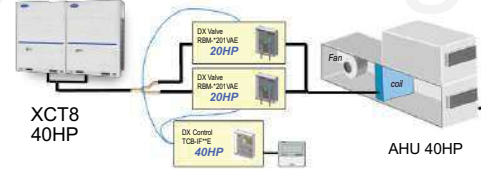
DX Valve Kit

Model name	40VA010V8-ATEE	40VA020V8-ATEE
Capacity code	HP 8, 10, 12, 14, 16, 18, 20	
Dimensions (HxWxD)	mm 360x209x80	
Total weight	kg 2.3	2.4

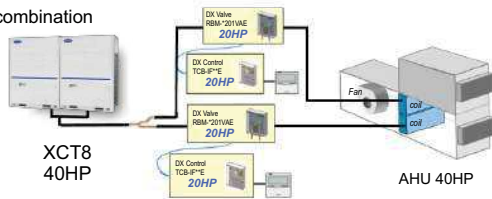
Single combination



Twin combination



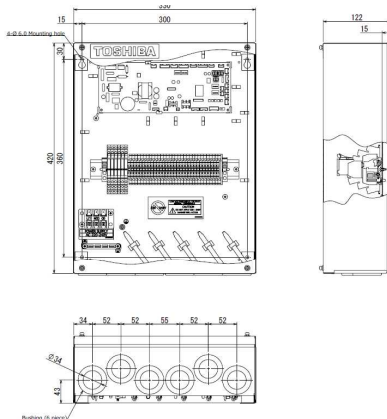
Multi combination



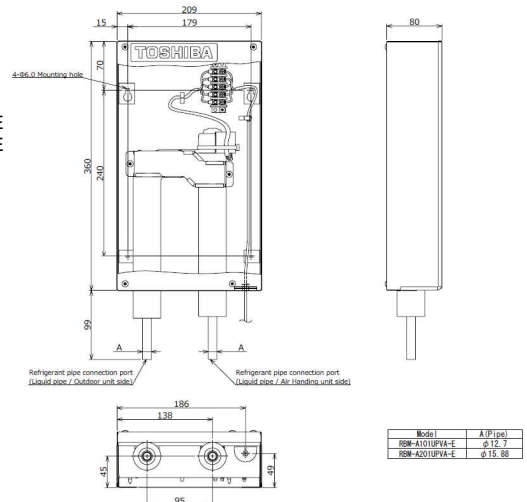
Drawings

Unit: mm

40VAM--C8FATEE
40VAMR-C8FATEE

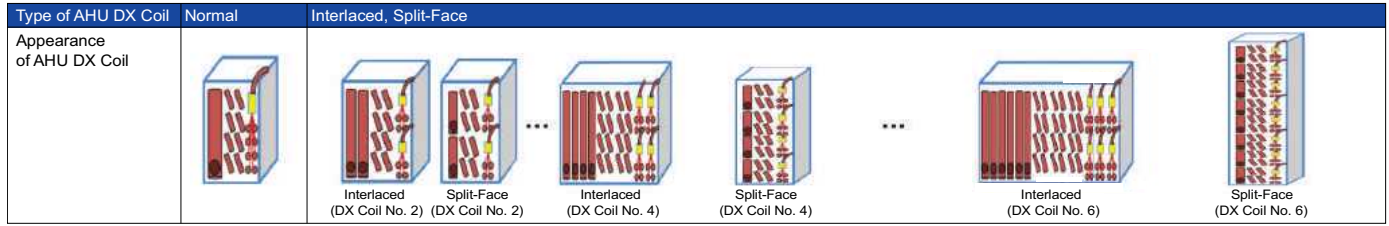


40VA010V8-ATEE
40VA020V8-ATEE



DX COIL INTERFACE ADVANCE

IDU



DX Coil Number	1	1	2	3	4	5	6	2	3
DX Combination	Single	Twin	Single-Multi (2)	Single-Multi (3)	Single-Multi (4)	Single-Multi (5)	Single-Multi (6)	Double-Twin	Triple-Twin
DX Controller Number	1	1	2	3	4	5	6	2	3
DX Valve Kit Number	1	2	2	3	4	5	6	4	6
DX Valve Kit Combination [HP]	8	8							
	10	10							
	12	12							
	14	14							
	16	16	8+8	8+8					
	18	18		10+8					
	20	20	10+10	10+10					
	22			12+10					
	24		12+12	12+12	8+8+8				
	26			10+8+8					
	28		14+14	14+14	10+10+8				
	30			16+14	10+10+10				
	32		16+16	12+10+10	8+8+8+8			(8+8)+(8+8)	
	34		18+16	12+12+10	10+8+8+8				
	36		18+18	12+12+12	10+10+8+8				
	38			20+18	10+10+10+8				
	40		20+20	20+20	10+10+10+10	8+8+8+8+8		(10+10)+(10+10)	
	42			14+14+14	12+10+10+10	10+8+8+8+8			
	44			16+14+14	12+12+10+10	10+10+8+8+8			
	46			16+16+14	12+12+12+10	10+10+10+8+8			
	48			16+16+16	12+12+12+12	10+10+10+10+8	8+8+8+8+8+8	(12+12)+(12+12)	(8+8)+(8+8)+(8+8)
	50			18+16+16		10+10+10+10+10	10+8+8+8+8+8		
	52			18+18+16		12+10+10+10+10	10+10+8+8+8+8		
	54			18+18+18		12+12+10+10+10	10+10+10+8+8+8		
	56			20+18+18	14+14+14+14	12+12+12+10+10	10+10+10+10+8+8	(14+14)+(14+14)	
	58			20+20+18	16+14+14+14	12+12+12+12+10	10+10+10+10+10+8		
	60			20+20+20	16+16+14+14	12+12+12+12+12	10+10+10+10+10+10		(10+10)+(10+10)+(10+10)
	62				16+16+16+14		12+10+10+10+10+10		
	64				16+16+16+16		12+12+10+10+10+10	(16+16)+(16+16)	
	66				18+16+16+16		12+12+12+10+10+10		
	68				18+18+16+16		12+12+12+12+10+10		
	70				18+18+18+16	14+14+14+14+14	12+12+12+12+12+10		
	72				18+18+18+18	16+14+14+14+14	12+12+12+12+12+12	(18+18)+(18+18)	(12+12)+(12+12)+(12+12)
	74				20+18+18+18	16+16+14+14+14			
	76				20+20+18+18	16+16+16+14+14			
	78				20+20+20+18	16+16+16+16+14			
	80				20+20+20+20	16+16+16+16+16		(20+20)+(20+20)	
	82				18+16+16+16+16				
	84				18+18+16+16+16	14+14+14+14+14+14			(14+14)+(14+14)+(14+14)
	86				18+18+18+16+16	16+14+14+14+14+14			
	88				18+18+18+18+16	16+16+14+14+14+14			
	90				18+18+18+18+18	16+16+16+14+14+14			
	92				20+18+18+18+18	16+16+16+16+14+14			
	94				20+20+18+18+18	16+16+16+16+16+14			
	96				20+20+20+18+18	16+16+16+16+16+16		(16+16)+(16+16)+(16+16)	
	98				20+20+20+20+18	18+16+16+16+16+16			
	100				20+20+20+20+20	18+18+16+16+16+16			
	102					18+18+18+16+16+16			
	104					18+18+18+18+16+16			
	106					18+18+18+18+18+16			
	108					18+18+18+18+18+18		(18+18)+(18+18)+(18+18)	
	110					20+18+18+18+18+18			
	112					20+20+18+18+18+18			
	114					20+20+20+18+18+18			
	116					20+20+20+20+18+18			
	118					20+20+20+20+20+18			
	120					20+20+20+20+20+20		(20+20)+(20+20)+(20+20)	

*Please refer to the guidelines of DX Coil Interface Advance for other combinations of DX Coil Controller and DX Valve Kit.