

Air Treatment Equipment

Outdoor-air processing unit



FXMQ-BFV2S



MERV8



MERV14

Lineup

Model Name	FXMQ80BFV2S	FXMQ140BFV2S	FXMQ200BFV2S	FXMQ250BFV2S
Capacity Index	80	140	200	250

Product Features



Room Temperature Control

Set point temperature can be selected similar to normal VRV indoor unit.



3 Steps Airflow

3 airflow levels (H/M/L) can be selected, which enhance usage and design flexibility.



Filter Options

The filter options of MERV8 and MERV14 are available.



Slim & Compact Design

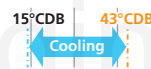
Only 300 mm in height and 700 mm in depth, the new casing comes with smaller footprint and with 59% reduction* in unit size.

*Reduction in size compared to conventional FXMQ200/250MF series



DC Motor

The change from AC motor to DC motor resulted in lower power consumption and more energy efficiency.



Extended Operation Range

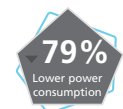
Extended operation range:
Cooling: 15°CDB to 43°CDB



VRT Control

With the VRT* control feature, highest efficiency can be achieved.

*Default setting is VRT off.



Lower Power Consumption

The new FXMQ-BF series requires 79% less power making it the perfect choice for small commercial applications.

*Reduction of power consumption refer from comparison with 22.4kW model (FXMQ-MF series).

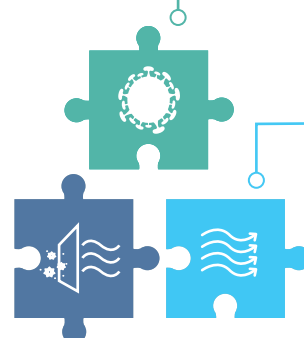


Ventilation

Provide outdoor air ventilation beyond the minimum requirement to reduce risk of air borne disease.

Filtration

Filter that achieve MERV14 or better grade can help remove infectious aerosol for recirculated air.



Air processing

Ventilate occupied space by supplying the fresh air and filtrate the air with MERV filters to enhance the IAQ while able to maintain the comfortability with room temperature control feature.

Benefits to Various Application Types



Supermarket

- Provides fresh air to closed space that are typically crowded such as supermarkets and grocery stores to reduce the risk of airborne transmitted diseases.
- The new 9kW capacity model is the perfect fit for smaller business such as small/medium-sized shops and convenience stores.



Hotel

- Maintains the best IAQ with room temperature control and fresh air ventilation in guest rooms and common areas.
- By maintaining ideal temperature and humidity, the unit could save future costs by extending the life cycle of furniture and appliances.



Factory

- Enhances the IAQ of the production areas where machines may generate dusty atmosphere and other contaminants.
- Maintains comfortability and precise temperature control in large areas with the remote sensor option BRCS01A-6.



Office/School

- Many hours were spent in school/office in one day, maintaining comfortability with fresh air and precise room temperature control is essential.
- Improves IAQ to help prevent occupants from allergies, sick building syndrome (SBS) and building-related illnesses (BRI).



Restaurant/Kitchen

- Freshens up the air by introducing fresh air while reducing the presence of unpleasant smell such as smokes, food smells, and stale air from the cooking area.
- With the MERV14 filter options, it is able to capture the airborne particles between 1 µm to 3 µm size range at 90% efficient rate*.
*ANSI/ASHRAE Standard 52.2-2017 P.44

Specifications

Model name		FXMQ80BFV2S	FXMQ140BFV2S	FXMQ200BFV2S	FXMQ250BFV2S	
Power supply		1 phase, 220 V, 50 Hz				
★1 ★2 Cooling capacity	Btu/h	30,700	54,600	76,400	95,500	
	kW	9.0	16.0	22.4	28.0	
Power consumption		kW	0.080	0.100	0.115	0.180
Casing		Galvanised steel plate				
Dimensions (HxWxD)		mm	300x700x700	300x1,000x700	300x1,400x700	
Airflow rate (H/M/L)	m³/min	11.5/8.6/5.8	20.5/15.4/10.3	29.0/21.8/14.5	36.0/27.0/18.0	
	l/s	192/143/97	342/257/172	483/363/242	600/450/300	
	cfm	406/304/205	724/544/364	1,024/770/512	1,271/953/635	
External static pressure		Pa	Rated 100 (200-50)			
Air filter		★3				
Piping connections	Liquid	mm	φ9.5 (Flare)			
	Gas	mm	φ15.9 (Flare)	φ19.1 (Brazing)	φ22.2 (Brazing)	
	Drain	mm	VM, V24: VP25 (External dia. 32, Internal dia. 25) V2S: VP25 (External dia. 34, Internal dia. 25)			
Machine weight		kg	28	36	46	47
Sound level (H/M/L)		dB(A)	37.5/30/23	41/34/25	42/35/26	44/36/27
★4 Operation range		°CDB	15 to 43			

Notes:

- ★1. The cooling capacity is the maximum value under the following conditions: Indoor temp.: 33°CDB, 28°CWB / outdoor temp.: 33°CDB, Piping length: 7.5m. The rated external static pressure and air volume are set in ().
- ★2. Capacities are net, including a deduction for indoor fan motor heat.
- ★3. Air filter is not standard accessory, but please mount it in the duct system of the suction side. Select its dust collection efficiency (gravity method) 50% or more.
- ★4. Operation range can be extend to 15°C by field setting. When the unit is all fresh air (OAPU) connection under cooling operation, the operation limit is at 19°C - 43°C. (extend of operation range is not available.)
- 5. VRT can be activated with remote controller thermistor and outdoor field setting.

Remarks:

- This machine cannot be used to handle internal heat loads. The blowout temperature changes depending on the air conditioning load, outside air temperature, and operation of the protective device. When the protection function is activated, unprocessed outside air maybe sent directly.
- When this unit is connected to another indoor unit, the outside air processing mixing ratio must be as follows: The total content capacity should be A% or less when the unit is connected.
A:B = 100:40 / A:B = 110:30 / A:B = 120:20 / A:B = 130:10
- During cooling operation, if the ceiling temperature exceeds 30°C and relative humidity reaches 80%, or fresh air is inducted into the ceiling, heat insulation material (glass wool or polyethylene foam, thickness: 10 mm or more) is required to prevent dew condensation.

Option List

Option name		FXMQ80BFVM FXMQ80BFV24 FXMQ80BFV2S	FXMQ140BFVM FXMQ140BFV24 FXMQ140BFV2S	FXMQ200BFVM FXMQ200BFV24 FXMQ200BFV2S	FXMQ250BFVM FXMQ250BFV24 FXMQ250BFV2S
Filter	MERV8	BAF376B56	BAF376B80	BAF376B160	
	MERV14	BAF377B56	BAF377B80	BAF377B160	
Filter chamber		KDDF37AA56	KDDF37AA80	KDDF37AA160	
Long life replacement filter		KAF371B56	KAF371B80	KAF371B160	
Service panel		KTBJ25K56F	KTBJ25K80F	KTBJ25K160F	
Air discharge adaptor		KDAJ25K56A	KDAJ25K71A	KDAJ25K140A	
Stylish remote controller	White	BRC1H63W			
	Black	BRC1H63K			
Navigation remote controller		BRC1E63			
Simplified remote controller		BRC2E61			
Wireless remote controller		BRC4C66			
Remote sensor (for indoor temperature)		BRCS01A-6			

Note: Refer to Engineering Data for full list of optional accessories.