



## 40LAS-W Series

*Chilled Water Fan Coil Unit*

51,700 - 232,180 BTU/H



World's No.1 Air Conditioning Expert

[www.carrier.co.th](http://www.carrier.co.th)

[www.ttair.co.th](http://www.ttair.co.th) | Tel : 02-385-0728 | E-mail : [sales@ttair.co.th](mailto:sales@ttair.co.th) | LINE ID : @ttair

# 40LAS-W Series



▲ 40LAS-W Series (Size : 004/006)



▲ 40LAS-W Series (Size : 007-020)

## The New, Versatile & Energy Efficient 40LAS-W Chilled Water Fan Coil Unit.

The Carrier **40LAS-W** Horizontal Type Chilled Water Fan Coil Units come in 7 sizes covering an air flow range between (1,600-6,000) CFM. These units have been engineered for domestic and commercial application. 40LAS-W Fan Coil Units produce nominal capacities ranging from (51,040-225,808) Btu/hr.

### Features

- **Direct Driven Forward Curved Centrifugal Fan - quiet operation.**
- **Carrier All Weather Cabinet - rugged and durable.**
- **Fire Retardant Insulation - minimises condensation & reduces sound levels.**
- **Filter(s) - easily serviceable.**

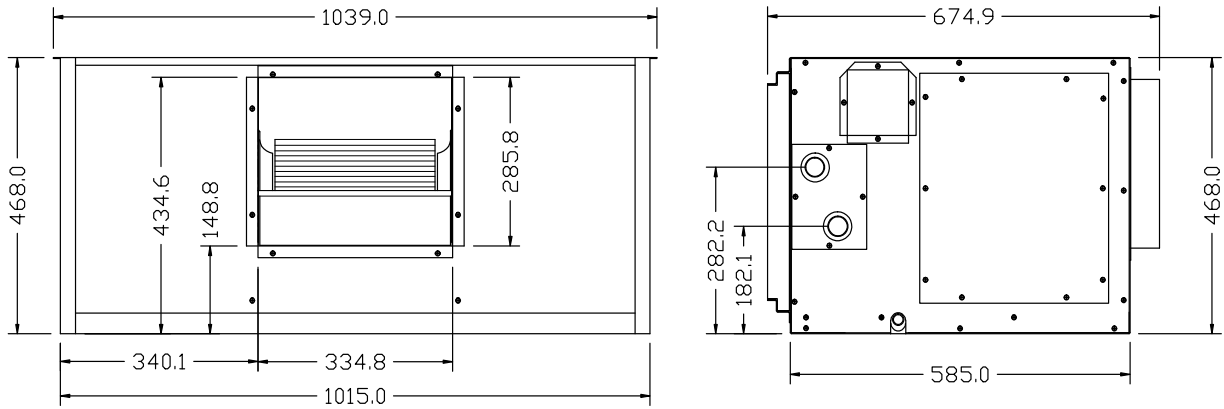
## Guide specifications

### Specifications

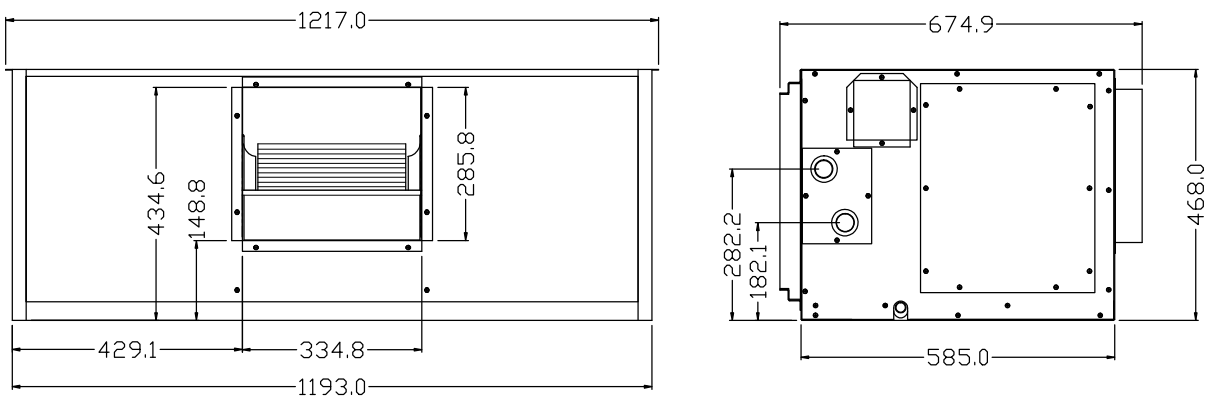
Model		Packaged Chilled Water Fan Coil Unit							
		40LAS-W							
		004	006	007	009	012	015	020	
Nominal Capacity	Cooling Capacity *	btu/h	51,700	67,080	85,690	107,280	136,530	162,250	232,180
	Air Flowrate	cfm	1,600	2,000	2,600	3,200	4,000	5,000	6,000
Power Supply	V/Ph/Hz	220 / 1 / 50							
Power Consumption	watts	440	640	880	880	1,280	1,570	1,570	
Operating Weight	kg	75	78	110	115	125	144	175	
Cooling Coil	Coil Arrangement	row / fpi	3/15	3/15	3/15	3/15	3/15	3/15	4/15
	Coil Face Area	sq.ft	3.33	4.11	5.22	6.67	8.25	10.08	12.18
	Coil / Fin Material	Cu/Al	Cu/Al	Cu/Al	Cu/Al	Cu/Al	Cu/Al	Cu/Al	Cu/Al
Fan	Fan Size	inch	10"x10"	10"x10"	10"x10"	10"x10"	10"x10"	12"x12"	12"x12"
	Fan Q'ty		1	1	2	2	2	2	2
Motor	Direct drive								
	Motor Current (RLA)	Amp	2.11	4.05	2 x 2.11	2 x 2.11	2 x 4.05	2 x 4.03	2 x 6.73
	Motor speed	rpm	890/780/620	945/890/800	890/780/620	890/780/620	945/890/800	790/730/650	880/770/670
Insulation	Type	Permanent split capacitor with internal thermal overload							
	Thermal Conductivity	PE Foam							
	Thickness	0.036 w/m.K							
Air Filter	Type	10							
	Size	mm	395 x 960	395 x 1138	395 x 1395	465 x 1395	524 x 1578	524 x 1878	620 x 1878
Dimension	Width	mm	1040	1220	1480	1480	1660	1960	1960
	Height	mm	470	470	470	535	600	600	690
	Depth	mm	675	675	675	675	675	780	780
Pipe Connection	Chilled water inlet	inch	1"	1"	1"	1"	1-1/4"	1-1/4"	1-1/4"
	Chilled water outlet	inch	1"	1"	1"	1"	1-1/4"	1-1/4"	1-1/4"
	Chilled water pipe connection type	Male Pipe Thread							
	Condensate drain dia.		1/2"	1/2"	1/2"	1/2"	1/2"	1/2"	1/2"
	Condensate drain connection type	Female Pipe Thread							

Remark : \* Shown capacity based on : Ent. Air temp.80 °Fdb/67 °Fwb  
Chilled water temp in/out 44/55 °F, Max air flowrate.

## Unit dimensions

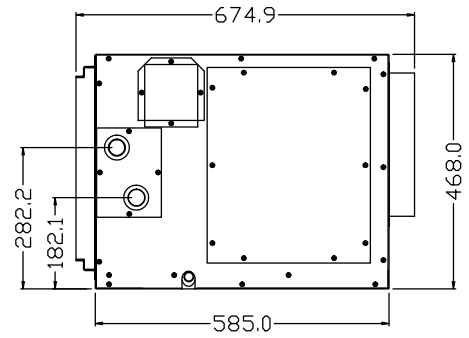
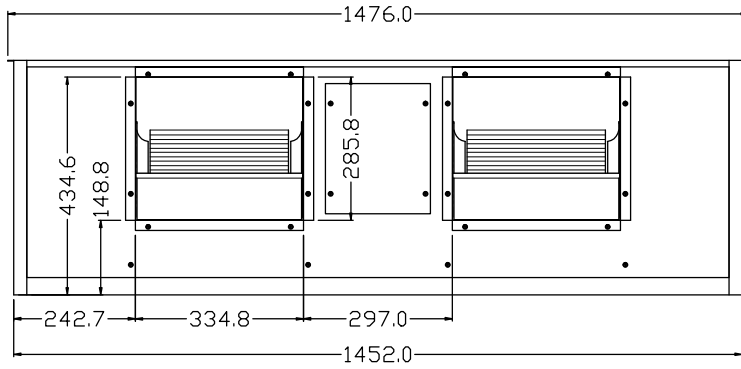


Model : 40LAS004W

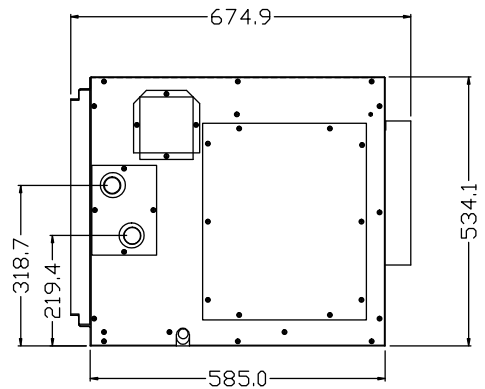
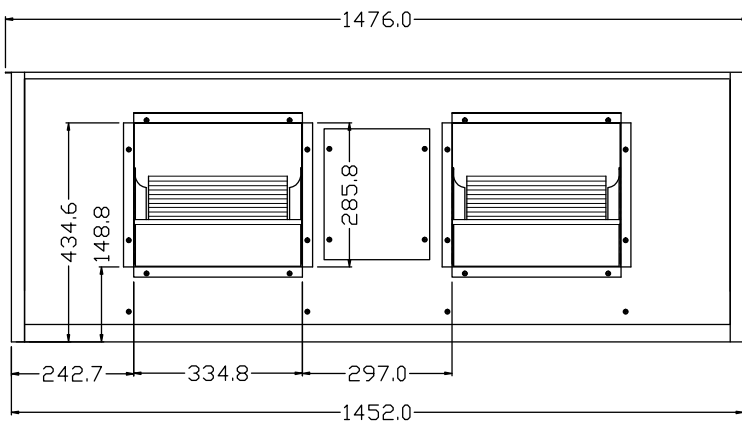


Model : 40LAS006W

## Unit dimensions

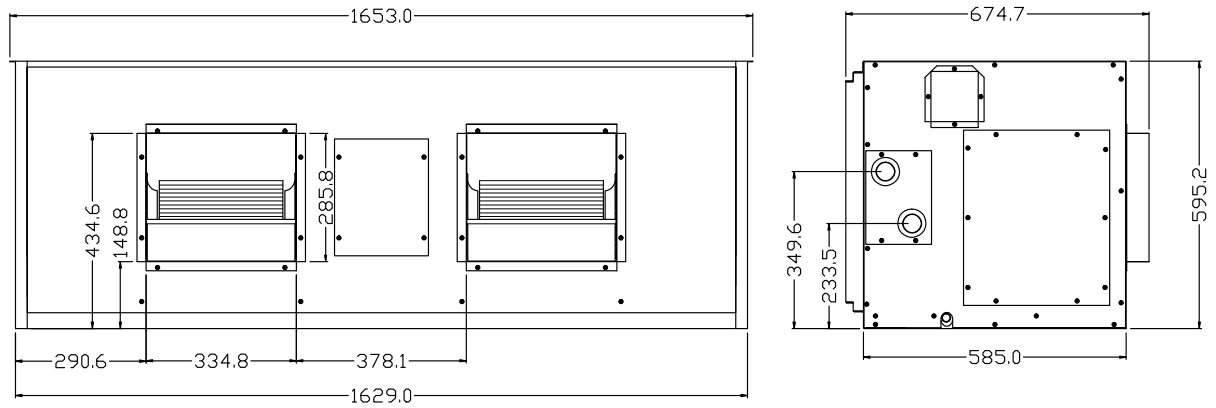


Model : 40LAS007W

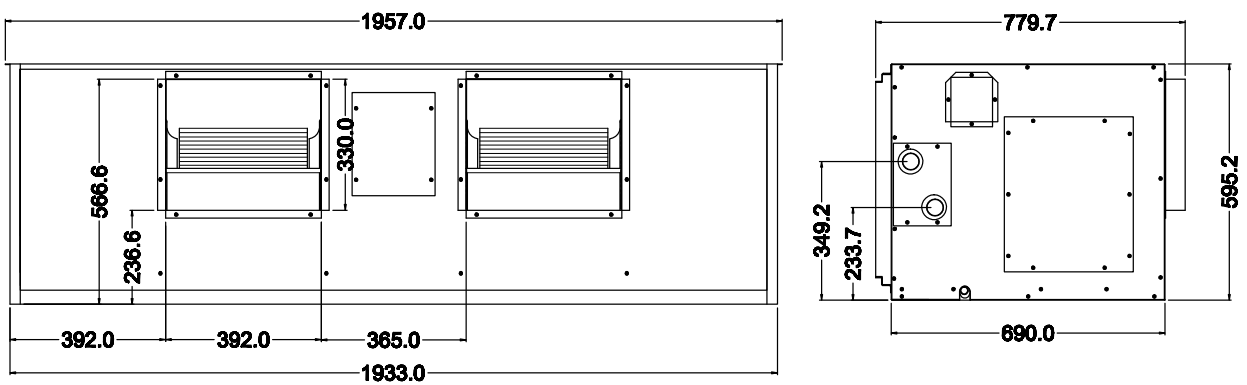


Model : 40LAS009W

## Unit dimensions



Model : 40LAS012W



Model : 40LAS015W, 40LAS020W

# Performance data

MODEL	CFM	Entering Chilled Water Temperature F	Entering Air Temp ( Fdb / Fwb )															
			76 / 63				78 / 65				80 / 67				82 / 69			
			Total Capacity btu/h	Sensible Capacity btu/h	Chilled Water Flowrate gpm	Water Pressure Drop ft.wg.	Total Capacity btu/h	Sensible Capacity btu/h	Chilled Water Flowrate gpm	Water Pressure Drop ft.wg.	Total Capacity btu/h	Sensible Capacity btu/h	Chilled Water Flowrate gpm	Water Pressure Drop ft.wg.	Total Capacity btu/h	Sensible Capacity btu/h	Chilled Water Flowrate gpm	Water Pressure Drop ft.wg.
40LAS004W	1,600	40	48,441	38,946	9.65	8.66	55,756	41,386	11.11	11.08	63,677	43,886	12.68	14.00	72,379	46,383	14.42	17.63
		45	36,402	33,110	7.26	5.17	42,156	35,341	8.41	6.67	48,697	37,576	9.72	8.58	57,236	40,118	11.42	11.47
		50	27,108	27,067	7.26	3.06	30,907	29,582	8.41	3.83	35,587	31,839	9.72	4.87	42,543	34,065	11.42	6.70
40LAS006W	2,000	40	62,882	49,752	12.53	16.32	72,208	52,840	14.38	20.81	82,374	56,016	16.41	26.24	93,245	59,137	18.57	32.82
		45	47,325	42,292	9.44	9.76	54,848	45,129	10.94	12.62	63,245	47,970	12.62	16.19	74,227	51,211	14.81	21.60
		50	35,003	34,757	9.44	5.69	40,067	37,834	10.94	7.19	46,277	40,635	12.62	9.20	55,448	43,506	14.81	12.71
40LAS007W	2,600	40	80,430	64,004	16.02	13.90	92,426	67,992	18.41	17.74	105,465	72,064	21.01	22.37	119,492	76,081	23.80	28.00
		45	60,508	54,441	12.07	8.31	70,127	58,091	13.99	10.74	80,741	61,679	16.11	13.74	94,925	65,878	18.94	18.37
		50	44,859	44,700	12.07	4.87	51,223	48,694	13.99	6.13	59,132	52,311	16.11	7.83	70,831	55,984	18.94	10.80
40LAS009W	3,200	40	100,543	79,807	20.03	14.19	115,516	84,581	23.01	18.10	131,786	89,662	26.25	22.82	149,244	94,684	29.73	28.55
		45	75,661	67,697	15.09	8.49	87,720	72,239	17.50	10.98	101,151	76,799	20.18	14.08	118,730	81,973	23.69	18.78
		50	55,965	55,668	15.09	4.96	63,993	60,571	17.50	6.25	73,953	65,041	20.18	8.00	88,634	69,626	23.69	11.05
40LAS012W	4,000	40	127,933	100,512	25.48	20.34	146,825	106,773	29.25	25.91	167,358	113,167	33.34	32.63	189,168	119,436	37.68	40.68
		45	96,410	85,464	19.23	12.19	111,775	91,195	22.30	15.78	128,823	96,955	25.70	20.22	150,976	103,463	30.12	26.90
		50	71,073	70,424	19.23	7.07	81,518	76,505	22.30	8.96	94,185	82,077	25.70	11.48	112,997	87,899	30.12	15.89
40LAS015W	5,000	40	152,067	121,839	30.29	11.57	174,911	129,471	34.84	14.78	199,640	137,249	39.77	18.64	226,629	144,997	45.14	23.40
		45	114,322	103,517	22.81	6.92	132,503	110,561	26.44	8.94	152,902	117,578	30.51	11.47	179,622	125,479	35.84	15.30
		50	84,773	84,668	22.81	4.06	96,977	92,434	26.44	5.12	111,818	99,534	30.51	6.53	133,768	106,539	35.84	8.97
40LAS020W	6,000	40	216,738	165,969	43.17	9.20	248,839	176,624	49.56	11.71	282,865	187,403	56.34	14.65	319,952	198,324	63.73	18.26
		45	162,880	140,941	32.50	5.50	189,466	150,359	37.80	7.14	219,502	160,163	43.79	9.23	255,987	171,137	51.07	12.15
		50	119,676	117,069	32.50	3.18	137,968	126,479	37.80	4.06	160,604	135,348	43.79	5.26	191,782	145,019	51.07	7.20

Remark : Performance based on chilled water temperature rise 10°F

# Model Nomenclature

Digit no.	1	2	3	4	5	6	7	8	9	10
Model	4	0	L	A	S	0	0	4	W	R

Air Handling Unit, 40LAS Series

Unit size = 004, 006, 007, 009, 012, 015, 020

R = Right Hand Coil, L = Left Hand Coil

W = Chilled Water Coil



บริษัท แคนเรียร์ (ประเทศไทย) จำกัด

1858/63-74 ชั้น 14, 15

ถ.เทพรัตน กม. 4.5 แขวงบางนาใต้

เขตบางนา กรุงเทพฯ 10260

โทร. 0-2090-9999 แฟกซ์: 0-2751-4778

Carrier (Thailand) Ltd.

1858/63-74 , 14<sup>th</sup>, 15<sup>th</sup> Floor,

Debaratna Road, Km.4.5, Bangna Tai,

Bangna Bangkok 10260 Thailand

Tel. 0-2090-9999 Fax: 0-2751-4778

YOUR CARRIER MAN :

บริษัทฯ ขอสงวนสิทธิ์ที่จะเปลี่ยนแปลงรายละเอียดข้างต้น โดยไม่ต้องแจ้งให้ทราบล่วงหน้า  
Carrier reserves the right to make changes in specifications without prior notice.

40LAS-W\_06082023